

READY 
TO RACE



X-BOW GT XR

LIST OF OPTIONS

SEPTEMBER 2025

ALL PRICES ARE EXCLUSIVE OF VAT
ALL PRICES ARE SURCHARGES TO THE BASE VEHICLE AND ONLY APPLY ONCE TO THE FIRST CONFIGURATION



HAND PAINTED FULL CARBON BODYWORK STANDARD COLORS

ELECTRONIC ORANGE

WITHOUT SURCHARGE



HAND PAINTED FULL CARBON BODYWORK STANDARD COLORS

SMOKE GREY

WITHOUT SURCHARGE



HAND PAINTED FULL CARBON BODYWORK STANDARD COLORS

PEARL WHITE GLOSS

WITHOUT SURCHARGE



HAND PAINTED FULL CARBON BODYWORK
CARBON FINISHES

CARBON CLEAR GLOSS



HAND PAINTED FULL CARBON BODYWORK
CARBON FINISHES

CARBON CLEAR MATT

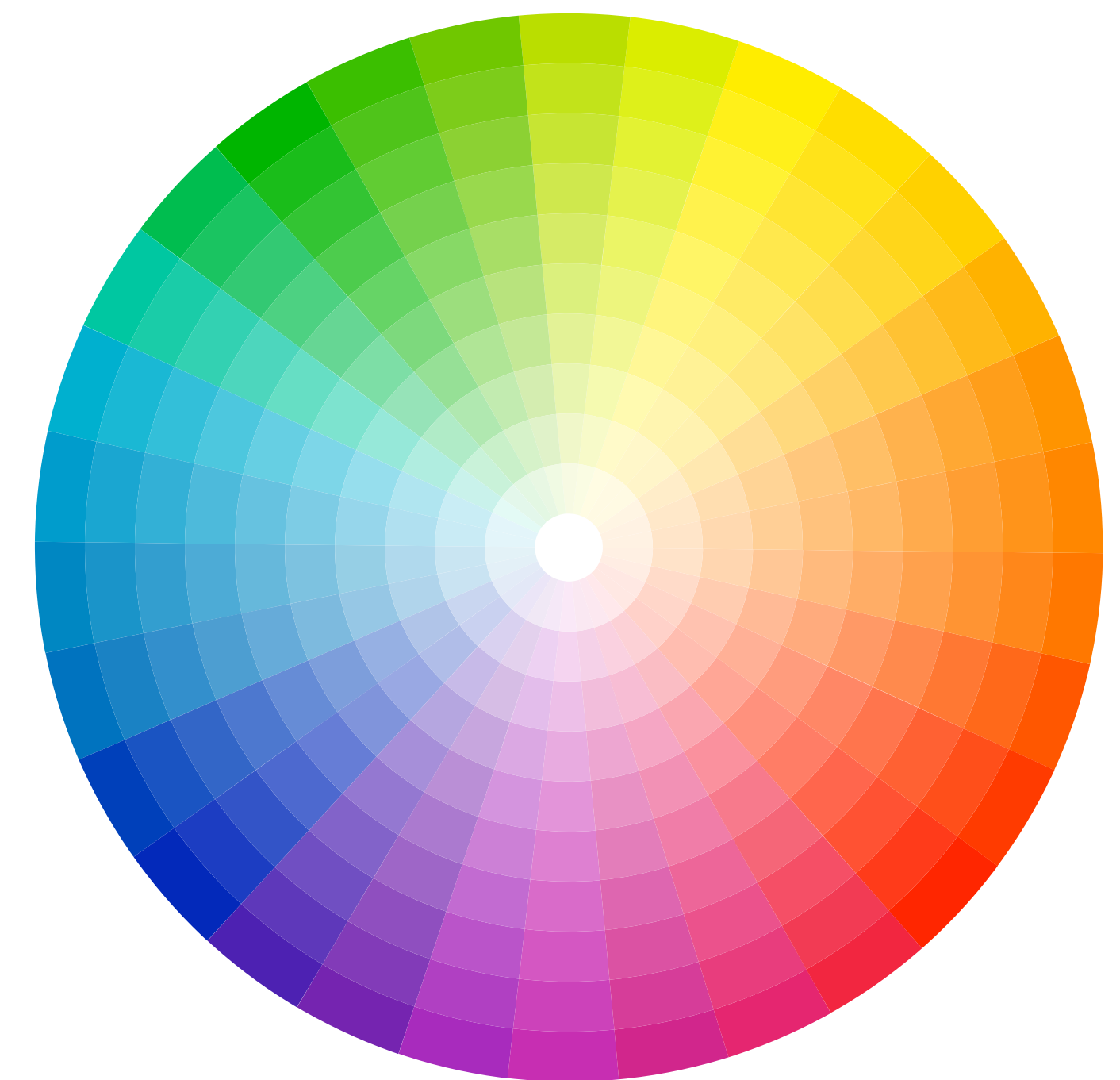


EXTERIOR COLOR

**HAND PAINTED
FULL CARBON BODYWORK
CUSTOM PAINT JOBS**

UNLIMITED SELECTION OF TONES AND FINISHES

Over 400.000 colors.
Matt or glossy.



HAND PAINTED FULL CARBON BODYWORK CUSTOM PAINT JOBS

INDIVIDUAL SOLID

Unpatterned paint.
No effect pigments, but monochrome. Even uniform color.



HAND PAINTED FULL CARBON BODYWORK CUSTOM PAINT JOBS

INDIVIDUAL 3CT

Pearlescent paint.
Multi-layer structure with effect glaze.



EXTERIOR COLOR

**HAND PAINTED
FULL CARBON BODYWORK
CUSTOM PAINT JOBS**
INDIVIDUAL METALLIC

Metallic shine paint.
Tiny metallic pigments create a sparkling effect.



EXTERIOR COLOR

**HAND PAINTED
FULL CARBON BODYWORK
CARBON FINISHES**
INDIVIDUAL COLORED CARBON

Over 400,000 colors. Matt or glossy.
Level of transparency at choice.



HIGH PERFORMANCE FORGED WHEELS BY OZ RACING**BLACK GLOSS**

Y-Spokes-Design 19/20 Inch 5-Bolt

WITHOUT SURCHARGE**HIGH PERFORMANCE FORGED WHEELS BY OZ RACING****STAR GRAPHITE**

Y-Spokes-Design 19/20 Inch 5-Bolt

**HIGH PERFORMANCE FORGED WHEELS BY OZ RACING****GIORO CORSA**

Y-Spokes-Design 19/20 Inch 5-Bolt

**HIGH PERFORMANCE FORGED WHEELS BY OZ RACING****GOLD GLOSS**

Y-Spokes-Design 19/20 Inch 5-Bolt

**HIGH PERFORMANCE FORGED WHEELS BY OZ RACING****BRONZE MATT**

Y-Spokes-Design 19/20 Inch 5-Bolt



HIGH PERFORMANCE FORGED WHEELS BY OZ RACING**BLACK GLOSS**

GT2-Design 20/21 Inch Centrallock

**HIGH PERFORMANCE FORGED WHEELS BY OZ RACING****STAR GRAPHITE**

GT2-Design 20/21 Inch Centrallock

**HIGH PERFORMANCE FORGED WHEELS BY OZ RACING****GIORO CORSA**

GT2-Design 20/21 Inch Centrallock

**HIGH PERFORMANCE FORGED WHEELS BY OZ RACING****GOLD GLOSS**

GT2-Design 20/21 Inch Centrallock

**HIGH PERFORMANCE FORGED WHEELS BY OZ RACING****BRONZE MATT**

GT2-Design 20/21 Inch Centrallock



CFK DESIGN COVER WITH KTM LOGO

ORANGE - RAL 2009

For 5-Bolt-Wheels
4 pieces included (1 rim set)

WITHOUT SURCHARGE



CFK DESIGN COVER WITH KTM LOGO

INDIVIDUAL COLOR

For 5-Bolt-Wheels
8 pieces included (2 rim sets)



CFK DESIGN COVER WITH KTM LOGO

BLACK - RAL 9005

For 5-Bolt-Wheels
4 pieces included (1 rim set)



TITAN CENTER LOCK NUT

BLACK

For Central-Locking-Wheels
4 pieces included (1 rim set)

WITHOUT SURCHARGE



MICHELIN PILOT SPORT 4 S (SUMMER TYRE)
FOR 19/20 INCH

5-Bolt-Wheels
WITHOUT SURCHARGE



MICHELIN ALPIN 4 (WINTER TYRE)
FOR 19/20 INCH

5-Bolt-Wheels



PIRELLI P ZERO TROFEO RACE (SEMI SLICK)
FOR 20/21 INCH

Central-Locking-Wheels



PIRELLI P ZERO TROFEO RACE (SEMI SLICK)
FOR 19/20 INCH

5-Bolt-Wheels



MICHELIN PILOT SPORT 4 S (SUMMER TYRE)
FOR 20/21 INCH

Central-Locking-Wheels
WITHOUT SURCHARGE



TYRE VALVE COVER

SILVER / BLACK

Choice of tyre valve covers between silver or black.
To match the color scheme of the rims.

WITHOUT SURCHARGE



WHEEL BOLTS

SILVER / BLACK

Choice of wheel bolts between silver or black.
To match the color scheme of the rims.

WITHOUT SURCHARGE



**STEEL BRAKE SYSTEM,
AVAILABLE FOR 5-BOLT-WHEELS OR CENTRAL-LOCKING-WHEELS**

BLACK CALIPER RAL 9005

ORANGE KTM LOGO RAL 2009

Antilock Braking System (ABS) and Electronic Stability Programme (ESP)

Front axle : Steel system Ø 365 × 34 mm; 8-piston fixed caliper.

Rear axle : Steel system Ø 356 × 32 mm; 4-piston fixed caliper.

WITHOUT SURCHARGE

**STEEL BRAKE SYSTEM,
AVAILABLE FOR 5-BOLT-WHEELS OR CENTRAL-LOCKING-WHEELS**

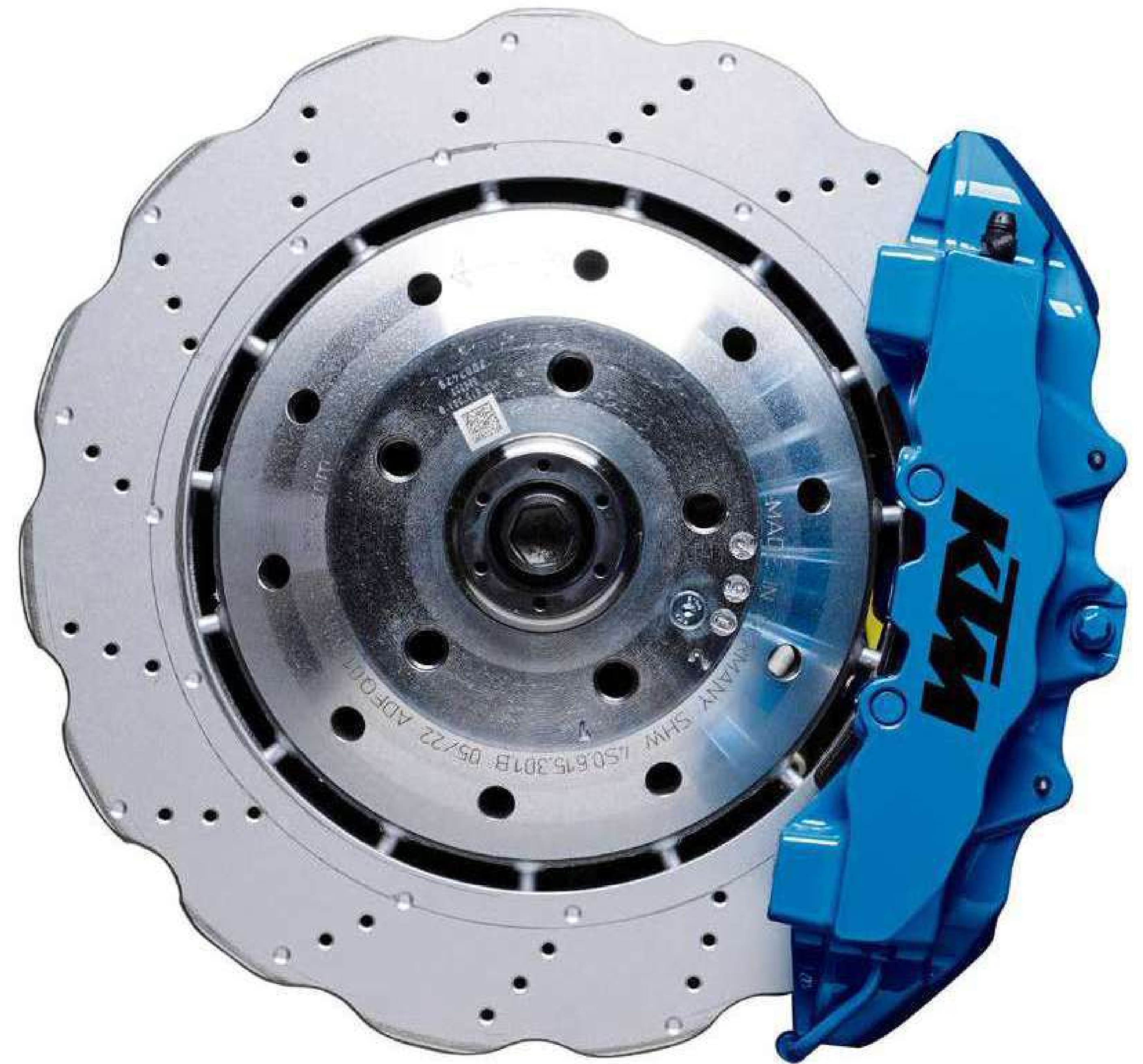
INDIVIDUAL COLOR

Antilock Braking System (ABS) and Electronic Stability Programme (ESP)

Front axle : Steel system Ø 365 × 34 mm; 8-piston fixed caliper.

Rear axle : Steel system Ø 356 × 32 mm; 4-piston fixed caliper.

216 RAL-color codes and 400,000 PPG codes available.



**CERAMIC PERFORMANCE BRAKE SYSTEM,
AVAILABLE FOR 5-BOLT-WHEELS OR CENTRAL-LOCKING-WHEELS**

BLACK CALIPER RAL 9005

ORANGE KTM LOGO RAL 2009

Antilock Braking System (ABS) and Electronic Stability Programme (ESP)

Front axle : Ceramic system Ø 380 x 38 mm; 6-piston fixed caliper.

Rear axle : Ceramic system Ø 356 x 32 mm; 4-piston fixed caliper..

**CERAMIC PERFORMANCE BRAKE SYSTEM,
AVAILABLE FOR 5-BOLT-WHEELS OR CENTRAL-LOCKING-WHEELS**

INDIVIDUAL COLOR

Antilock Braking System (ABS) and Electronic Stability Programme (ESP)

Front axle : Ceramic system Ø 380 x 38 mm; 6-piston fixed caliper.

Rear axle : Ceramic system Ø 356 × 32 mm; 4-piston fixed caliper.

216 RAL-color codes and 400,000 PPG codes available.



COLOR INDIVIDUALISATION

SUSPENSION SPRINGS

ORANGE - RAL 2009

WITHOUT SURCHARGE

SUSPENSION SPRINGS

INDIVIDUAL COLOR

216 RAL color codes and 400,000 PPG codes available.



TOW HOOK FRONT

RED - RAL 3020

WITHOUT SURCHARGE

INDIVIDUAL COLOR

216 RAL color codes and 400,000 PPG codes available.



KTM EMBLEM EXTERIOR FRONT AND REAR

ORANGE - RAL 2009

WITHOUT SURCHARGE



KTM EMBLEM EXTERIOR FRONT AND REAR

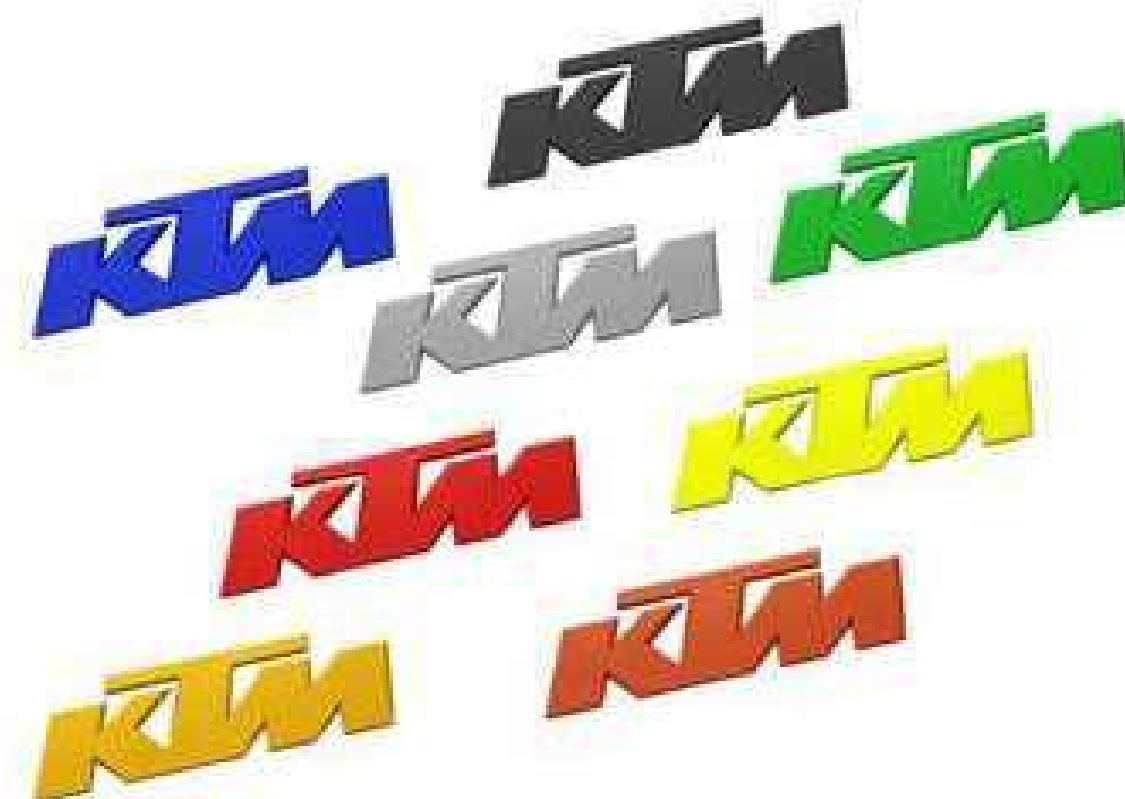
CARBON CLEAR MATT & CARBON CLEAR GLOSS



KTM EMBLEM EXTERIOR FRONT AND REAR

INDIVIDUAL COLOR

216 RAL color codes and 400,000 PPG codes available.



KTM EMBLEM 1× ENGINE COVER 2× INTERIOR

ORANGE - RAL 2009

WITHOUT SURCHARGE



KTM EMBLEM 1× ENGINE COVER 2× INTERIOR

ORANGE - RAL 2009

WITHOUT SURCHARGE



KTM EMBLEM 1× ENGINE COVER 2× INTERIOR

INDIVIDUAL COLOR

216 RAL color codes and 400,000 PPG codes available.



KTM EMBLEM 1× ENGINE COVER 2× INTERIOR

INDIVIDUAL COLOR

216 RAL color codes and 400,000 PPG codes available.



KTM LOGOS ON SEATBELTS

BLACK



KTM LOGO ON STEERING WHEEL

BLACK



COLOR INDIVIDUALISATION

X-BOW LOGO SIDECOVER

BASALTGREY - RAL 7012

WITHOUT SURCHARGE

X-BOW LOGO SIDE COVER

EXTERIOR CAR COLOR

X-BOW LOGO SIDE COVER

INDIVIDUAL COLOR

216 RAL color codes and 400,000 PPG codes available.



CONTRAST STITCHING

ORANGE - RAL 2009

WITHOUT SURCHARGE



CONTRAST STITCHING INDIVIDUAL COLOR

INDIVIDUAL COLOR



HEADLINER WITH INDIVIDUAL CONTRAST STITCHING

INDIVIDUAL COLOR



SEATPADDINGS WITH INDIVIDUAL CONTRAST STITCHING

INDIVIDUAL COLOR



BELT GUARD PROTECTION INCLUDING COOLING

The belt guard offers optimum protection against tyre wear on racetracks, as well as dirt and gravel on gravel roads.



CARBON WHEELHOUSE

The standard wheel housings made of plastic can be exchanged for the visually appealing carbon variant.

BALL-BEARING ANTI-ROLL-BAR

The ball-bearing anti-roll bar reduces friction in its mounting points, allowing smoother and more precise suspension movement compared to a standard bushing-mounted bar.



CAPRISTO CFK DIFFUSOR "OEM STYLE"

GLOSS / MATT

Crafted from high-quality carbon fiber, this enhanced rear diffuser showcases an exquisite full-carbon finish with high-end aesthetic carbon surfaces all around with a newly refined upper section, while remaining OEM aerodynamic characteristics.

Available in gloss or matt finish.



CAPRISTO CFK DIFFUSOR "LC STYLE"

GLOSS / MATT

Enhanced rear diffuser with improved aerodynamic efficiency, increasing stability and downforce at speed. Crafted from high-quality carbon fiber, it features perfectly aesthetic carbon surfaces all around — adding both performance and visual impact.

Available in gloss or matt finish.



PROTECTION FOILS (PPF)

The wide range of wraps offer the best possible protection to the high-quality paintwork, especially stone or grit impacting against the bodywork.

PPF SET FULL FRONT

GLOSS / MATT



FULL FRONT

PPF SET RACING

GLOSS / MATT



RACING

PPF SET FULL SPEC

GLOSS / MATT



FULL SPEC

PPF REAR WING GT-XR

GLOSS / MATT



REAR WING GT-XR

WALLPAPERING AND FOILING TRUNK

MATT

To protect both the stowed luggage and the trunk, it is recommended to have it lined with fabric in the lower area and protection foil in the upper area.



PPF TRUNK

GLOSS / MATT



TRUNK

CARBON GLOVE BOX*

A glove compartment made of carbon fibre, which is positioned in the area between the seats, offers an elegant solution for keeping small items in reach at all times and at the same time complements the high-quality look of the interior.



CARBON MIDDLE CONSOLE*

Further unify the carbon look in the interior by replacing the centre console cover from standard aluminium to a carbon version.



CARBON KEY HOLDER*

To store the Key during your ride, we now offer a Carbon Key-holder in KTM optic, mounted wherever you want.



CARBON CO-DRIVER FEETSTEP*

Change the footrest in the passenger footwell from aluminium to carbon to round off the look of the interior.



*CARBON PACKAGE INTERIOR

Included all carbon interior options in one package to a special price.

SOUNDSYSTEM WITH BLUETOOTH CONNECTION

Soundsystem consisting of two High- and Mid-Tone speakers as well as a Subwoofer. Connection to smartphone via bluetooth.



MAGNETIC CHARGING PLUG

To charge the battery easily while the engine cover is closed, these magnetically coupled charging plugs in the rear area recommended. Particularly recommended for longer periods of non-use, for example in exhibition vehicles.

BATTERY CHARGER

The CTEK battery maintenance device keeps the car battery optimally charged by automatically preventing overcharging and sulfation. Recommended for vehicles in storage or being driven irregularly.

Compatible with the magnetic charging plug.



BATTERY CUT-OFF SWITCH

A switched positioned in the engine compartment to disconnect the battery from the supply network and preserve it, for example, when the vehicle is not in use for a long time, such as during the winter break.

*The use of a battery disconnect switch is mandatory for air or sea in order to safely disconnect the battery from the electrical circuit and thus ensure safety during transport.



TRANSPORT COVER

White cover for transporting the car, protection for driver seat, four rim protectors, for a safety transport from the factory.

WITHOUT SURCHARGE



INDOORCOVER

Black car cover with perfect fitting for indoor storage. Included in the overall vehicle delivery.

WITHOUT SURCHARGE



X-BOW LUGGAGE SET BY MEINDL

Exclusive Meindl bag set out of a basebag, topbag and an etui for the glovebox.



SMARTPHONE COVER FOR INDUCTIVE INTERFACE

Cover for your smartphone to mount it on the car interface.

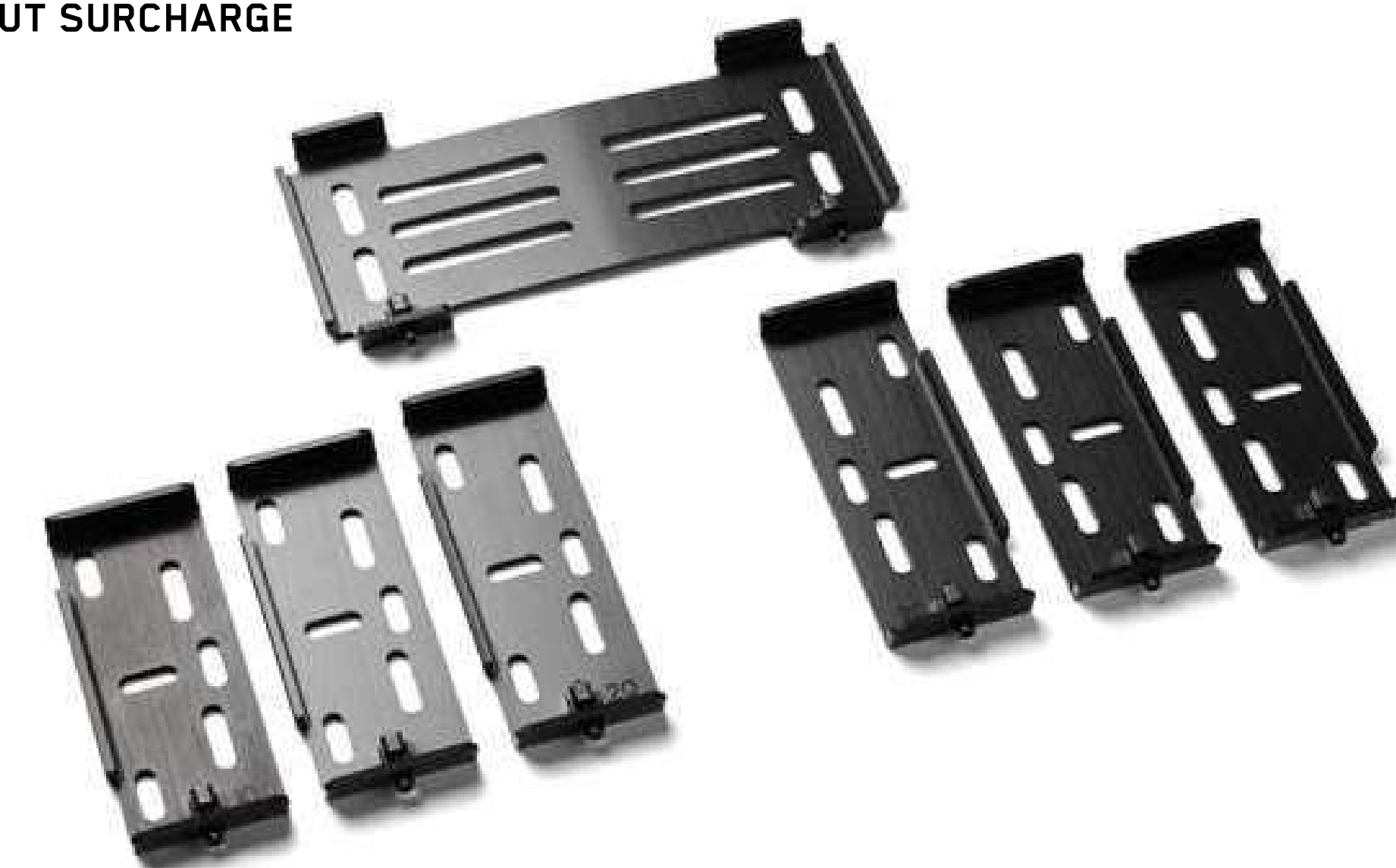
WITHOUT SURCHARGE



LICENSE PLATE HOLDER

Frameless aluminum bracket in different, country-specific dimensions. .

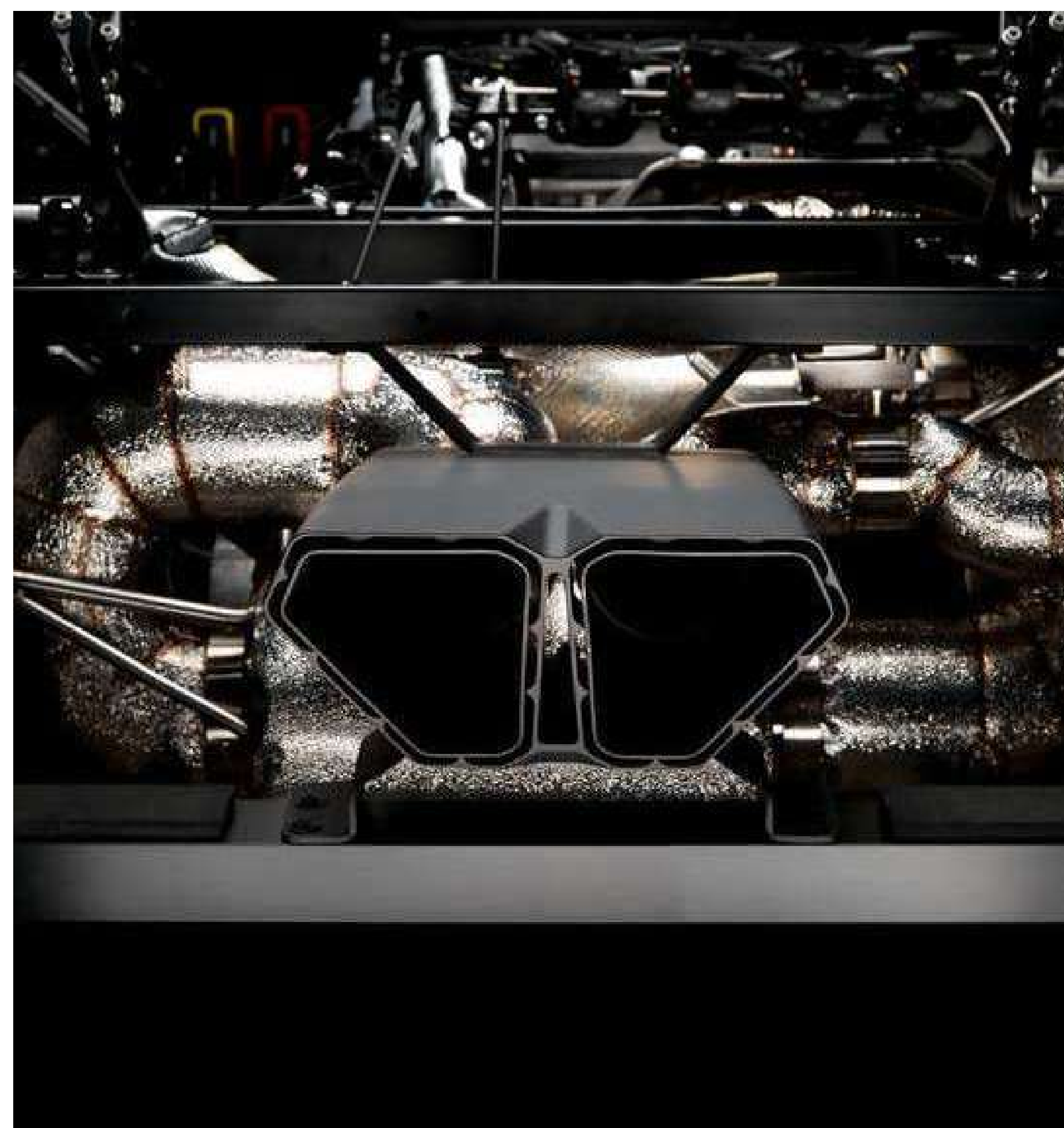
WITHOUT SURCHARGE



SPORT EXHAUST SYSTEM*

Racing Exhaust system with flap control, original exhaust will be added for TÜV.

If sport exhaust system is mounted at our factory, we are able to keep the standard system.



SPORT CATALYTIC CONVERTER*

100cpi metal catalytic converter. Offers lower exhaust backpressure than the standard ceramic one, improving engine performance & throttle response. Original catalytic converter will be added for TÜV.

If sport exhaust system is mounted at our factory, we are able to keep the standard system.

CATALYTIC CONVERTER REPLACEMENT PIPE*

The catalytic converter replacement pipe removes all exhaust flow restrictions, resulting in increased power, better throttle response and a louder, more aggressive exhaust sound. Original catalytic converter will be added for TÜV.

If sport exhaust system is mounted at our factory, we are able to keep the standard system.

PERFORMANCE SUSPENSION WITH LIFT KW V5 HLS*

Adjustable performance suspension which can be raised by a few centimeters at the touch of a button, so that you can drive slowly over kerbs or similar obstacles without any problems.

The suspension is installed in-house by a KW partner and certified by the German TÜV (without CoC). Basic color springs black.



SUSPENSION SPRINGS*

BLACK

WITHOUT SURCHARGE

INDIVIDUAL COLOR

216 RAL color codes and 400,000 PPG codes available.



ADDITIONAL HARDER SPRINGS FOR PERFORMANCE SUSPENSION*

Additional spring kit to increase suspension stiffness including:

- Front Axle 100-50-150
- Rear Axle 130-50-170
- Helper springs

Only in combination with the Performance Suspension with Lift KW V5 HLS.

BLACK

INDIVIDUAL COLOR

216 RAL color codes and 400,000 PPG codes available.

REAR-WING*

The standard rear view camera on the rear-wing is currently not possible on the GTX- or GT2-wing.

If a GT2 odr GTX rear-wing is mounted at our factory, we are able to keep the standard rear-wing.

GTX BLACK MATT



GT2 CARBON CLEAR MATT



GT2 CARBON CLEAR GLOSS



PPF REAR-WING*

REAR-WING GT2 GLOSS

REAR-WING GT2 MATT

GT2 MIRRORS*
MATT & GLOSS



PROTECTION FOIL WINDSCREEN* **



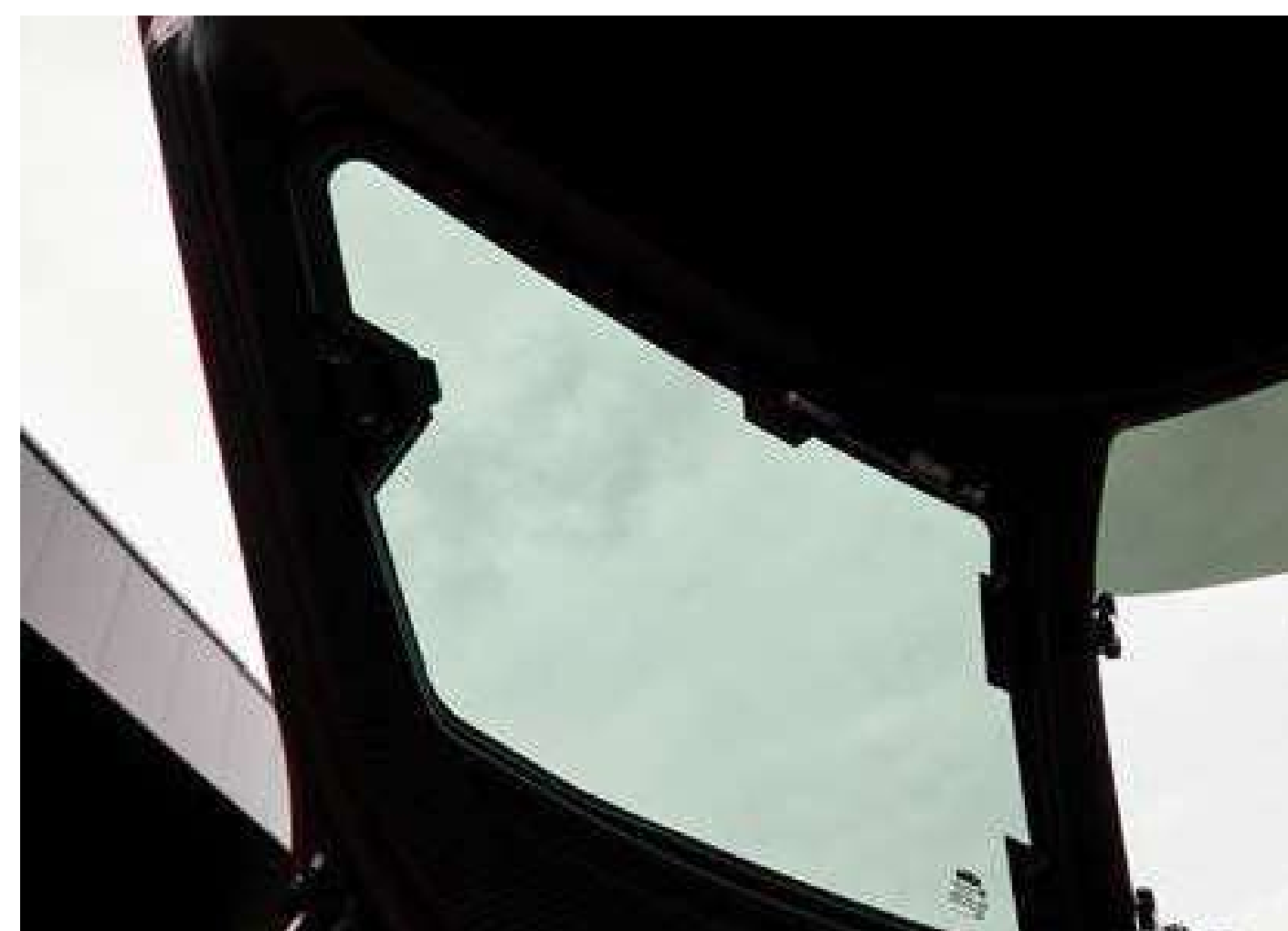
SKID-PLATES FRONTSPLITTER*



SUNSHADE FOILING* **



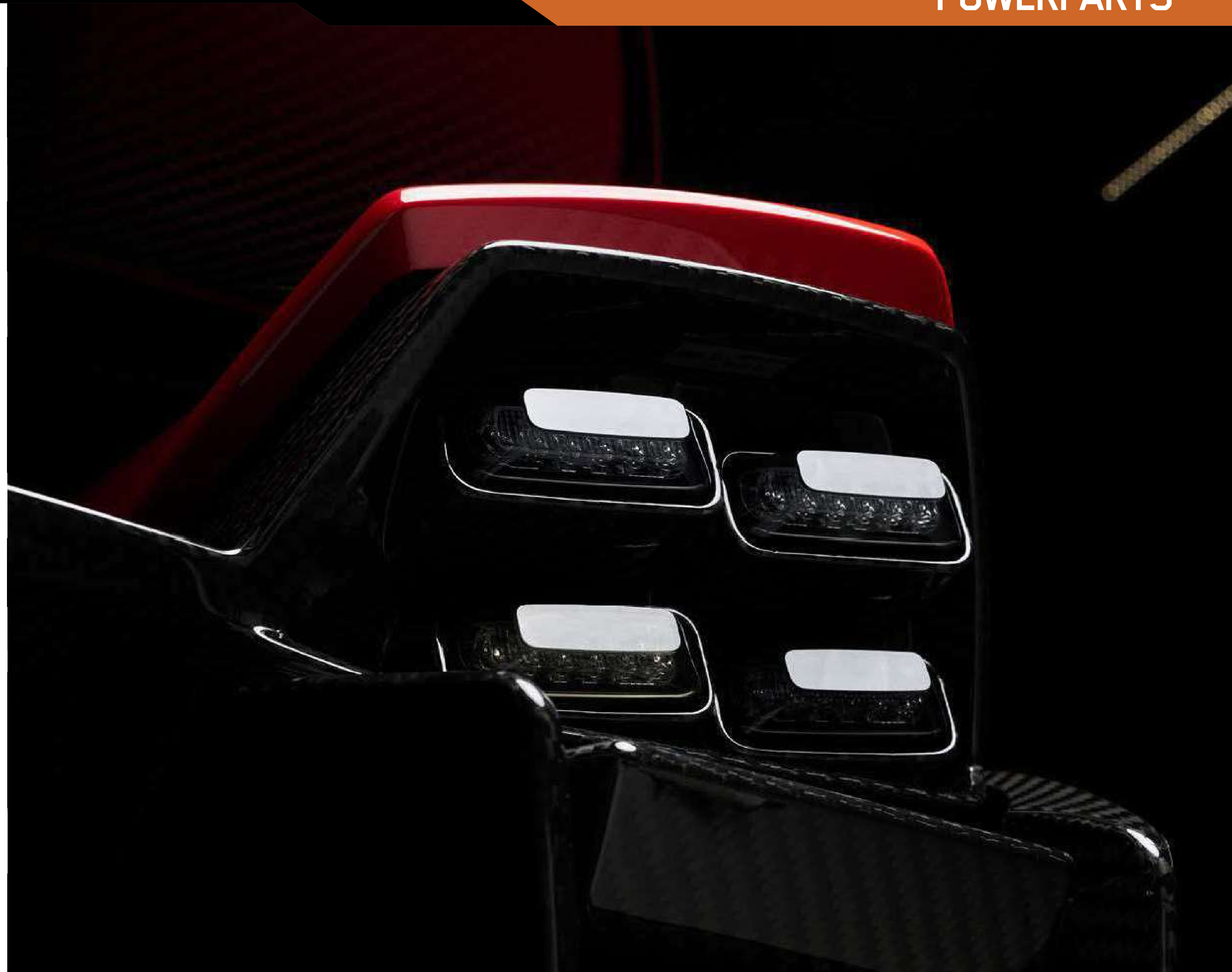
TINTED SIDE WINDOWS* **



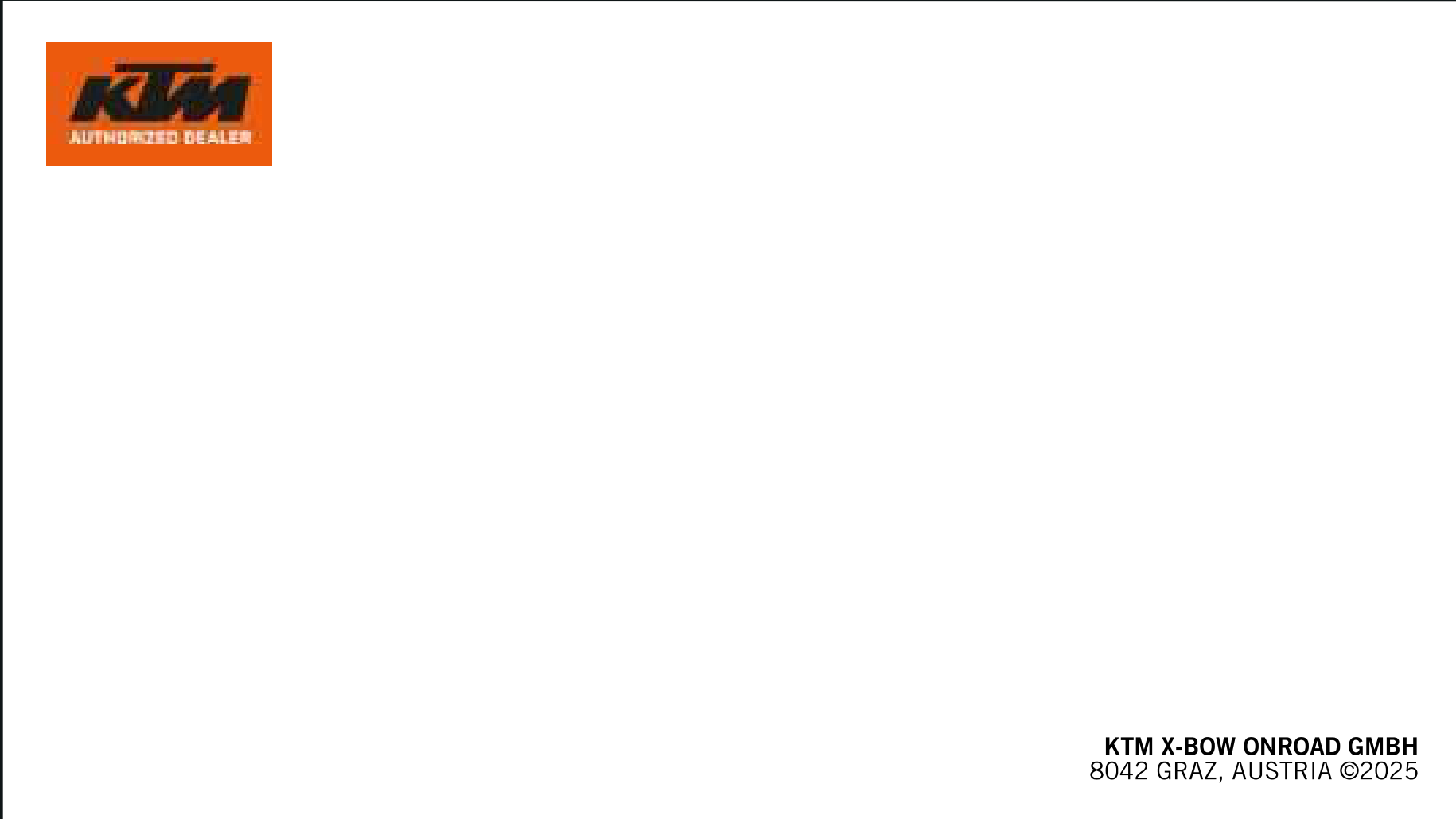
TURN SIGNALS TINTED*

(*not homologated, liability waver necessary)

(**mounting just in combination with ordering protection foils (p. 32), otherwise the material will be attached to the car)



KTM.COM



The automotive vehicles advertised in this brochure are suitable for road traffic only in the homologated version. When purchasing and operating a motor vehicle, it is essential to observe the and hazard warnings in the operating instructions (in particular the specified speed limits) must be observed. The vehicles illustrated may differ from the standard model in certain details and in some cases show optional equipment at extra cost. All information on scope of delivery, appearance, performance, dimensions and weights of the motor vehicles are given without obligation and subject to errors, printing errors, misprints, typesetting and typing errors; we reserve the right to make changes in this respect at any time. Subject to change at any time. Model specifications may vary from country to country.

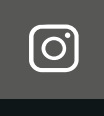
Version September 2025



@KTM X-BOW



@KTM X-BOW



@KTM_XBOW